

# catch-NET SYSTEM

## FOR RUNAWAY TRUCKS



## Dragnet Vehicle Arresting Barriers

The Dragnet Truck Escape System is comprised of a series of nets set up along a truck escape ramp. The array of nets is arranged to stop the vehicle in the distance allowed, while minimizing the deceleration forces. These nets made of aircraft cable can have one or two energy absorbers connected on each side. The energy absorbers, in turn, are mounted within the concrete walls of the truck escape ramp.



The variables involved with determining the stopping distance and 'g' load response of a system are vehicle weight, vehicle speed and net width. Dragnet Truck Escape Systems have been designed to stop a wide range of vehicles weighing up to 90,000 pounds and traveling up to 90 mph.



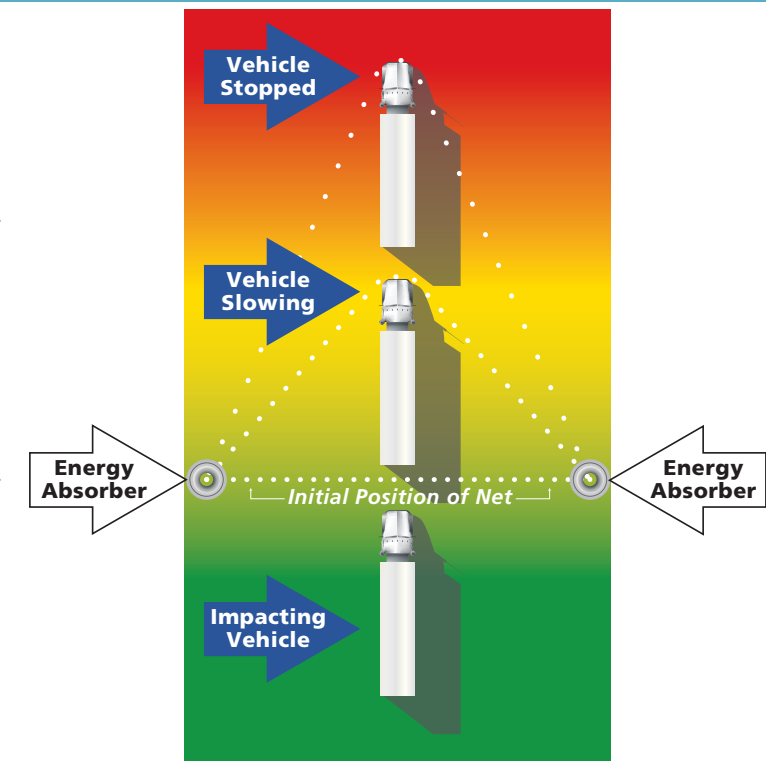
A 4,500-pound vehicle hitting a 30-foot wide net at a speed of 62 mph will stop in approximately 83 feet with an average deceleration of approximately 1.6 g's.

## Energy Absorbers

Dragnet's energy absorbers use a patented "metal bender" principle for absorbing energy, which provides the means to stop vehicles of varying weights and speeds. The absorbers are primarily comprised of a chamber, a length of metal tape and a series of offset pins.

As the metal tape is pulled through the series of offset pins, the tape is bent back and forth beyond its yield point. The process of bending the metal beyond its yield point is the principal mechanism for absorbing the energy of impact.

The absorbers utilize few moving parts, making them virtually maintenance free. Following an arrestment, the system can be quickly returned to service by replacing the metal tapes with minimal time and effort.



	Trucks & RVs	Injuries	Fatals
Used <i>CatchNET</i>	6	0	0
Bypassed <i>CatchNET</i> and crashed	4	1	4

Runaway truck *CatchNET* System is found on U.S. 16 west of Buffalo. There is a brake check area at milepost 83.45 when traveling eastbound on U.S. 16. The runaway truck *CatchNET* can be found at milepost 85.

## Trucks and RVs that used *CatchNET*



Used *CatchNET* August 31, 2007.  
No injuries, minimal damage.  
80,000 lbs, 40 mph, used 5 nets.

Used *CatchNET* August 27, 2008.  
No injuries, minimal damage.  
42,000 lbs, 35 mph, used 3 nets.



Used *CatchNET* August 26, 2010.  
No injuries, minimal damage.  
15,000 lbs, 60 mph, used 1 net.

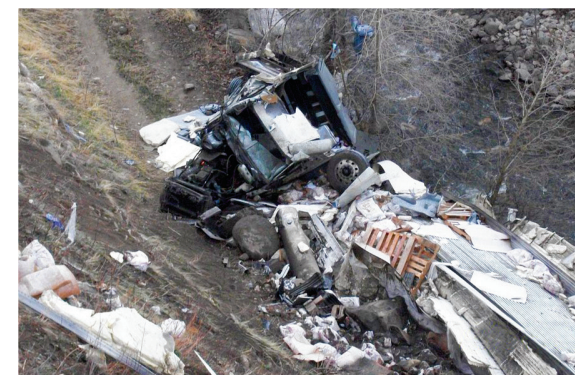
Used *CatchNET* May 29, 2012.  
No injuries, minimal damage.  
55,000 lbs, 70 mph, used 7 nets.



## Trucks that bypassed *CatchNET*



Bypassed *CatchNET* April 4, 2011.  
Crashed at milepost 86. Major injuries.  
Hauling bags of bentonite powder.



Bypassed *CatchNET* September 4, 2012.  
Crashed at milepost 86. Fatal injuries.  
Hauling bags of bentonite gravel.

Bypassed *CatchNET* September 23, 2008.  
Crashed at milepost 86. Fatal injuries.  
Hauling bags of bentonite powder.



Bypassed *CatchNET* April 1, 2012.  
Crashed at milepost 86. Fatal injuries.  
Hauling bags of powdered sugar.

